



## FAVN™

---

Favn™; the Danish word for embrace, is a result of a creative dialog between the Spanish designer, Jaime Hayon and Fritz Hansen. The sofa's open and rounded curves are inviting, and perfect for relaxation, work and everything inbetween.



REPUBLIC OF **Fritz Hansen**®

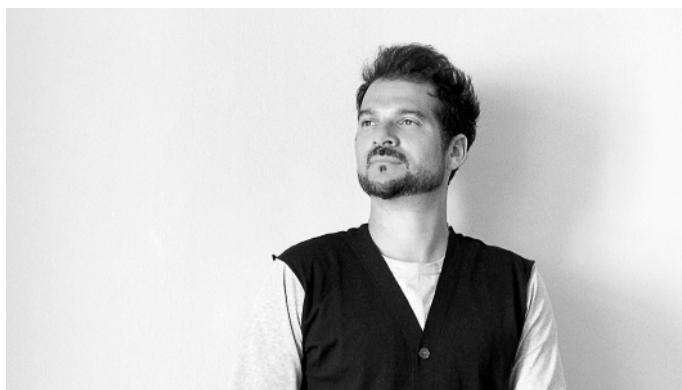
## PRODUCT DESCRIPTION

The shell of the sofa consists of two parts: a base and a back shell, both made from hard polyurethane foam with glass fibre reinforcement. Both parts have an embedded steel frame and the base also with mounted nozag springs. The base and back shell are assembled with 6 steel brackets and Hex screws (can also be disassembled for moving with an Hex key no.4). The outside of the back shell and base is covered with a thin, soft layer of polyurethane foam and wadding. The seat and back cushions are made of PUR foam and the decorative cushions are made of low resilience memory PUR foam.

The 4 legs consists of 3 parts: an upholstered "trumpet" matching the base of the sofa, a satin polished aluminium cylinder and a large felt glide (for soft wooden floors).

## DESIGN

Jaime Hayon, 2011.

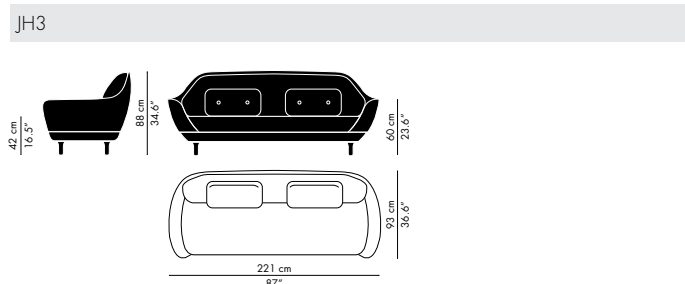


## JAIME HAYON 1974-

Spanish artist/designer Jaime Hayon was born in Madrid in 1974. As a teenager, he submerged himself in skateboard culture and graffiti art, which formed the detailed, bold yet whimsical imagery so prevalent in his work today.

In 1997, after studying industrial design in Madrid and Paris, he joined Fabrica, the Benetton-funded design and communication academy, working closely with the legendary image-maker and agitator Oliverio Toscani. After a short time he was promoted from student to head of their Design Department. Eight years later, Jaime broke out on his own, first with his collections of designer toys, ceramics and furniture, then followed by interior design and installations.

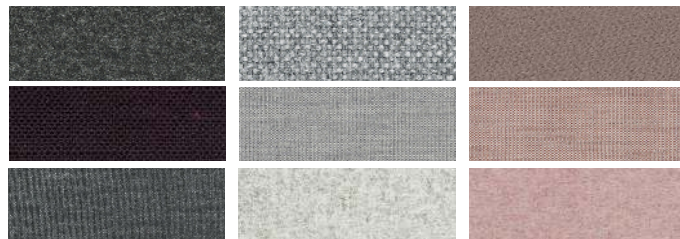
## VARIATIONS & DIMENSIONS



## UPHOLSTERY

The Favn™ sofa comes in a selection of unique Designer Selection colours in a mix of 3 fabrics; one fabric for the shell and base, a second for the seat and back cushions and a third fabric for the small decorative cushions.

The Designer Selections are:



### BLACK

SHELL: DIVINA MELANGE 180  
CUSHIONS: MILANI 7157/50  
DECORATIVE CUSHIONS:  
REMIX 173

### LIGHT GREY

SHELL: HALLINGDAL 130  
CUSHIONS: CANVAS 124  
DECORATIVE CUSHIONS:  
DIVINA MELANGE 120

### LIGHT GREY

SHELL: STEELCUT 605  
CUSHIONS: CANVAS 614  
DECORATIVE CUSHIONS:  
DIVINA MD 613

Favn is also available in the following selection of fabrics:

**Fritz Hansen Colours:** The Fritz Hansen Colours are created exclusively by Republic of Fritz Hansen's own design team and consist of serene pale pink, warm and earthy terracotta orange and finally deep ocean blue.

**Fabrics:** Canvas (seat/back & decorative cushions only), Capture, Diablo (seat/back & decorative cushions only), Fame, Fiord, Divina, Divina Melange, Divina MD, Hallingdal, Remix (seat/back & decorative cushions only), Steelcut, Steelcut Trio, Sunniva and Tonus.



## WARRANTY

A five-year warranty against manufacturing defects in standard products (materials and workmanship). Wear, tear and damage to the product are not covered under this warranty. Claims from end users under the guarantee must be submitted to the vendor from whom the product was purchased. All measurements are indicative.

### STANDARD WARRANTY:

5 years

### MY REPUBLIC EXTENDED WARRANTY:

5 years: Base (movable part), Fabric, Cushions, Decorative cushions.  
10 years: Shell.

To obtain an extended warranty offered through My Republic the products should be registered online. Go to [www.fritzhenzen.com/myrepublic](http://www.fritzhenzen.com/myrepublic) to register.

## ENVIRONMENTAL PRODUCT INFORMATION

Sofa for meetings, lounges, dining and private use.

### MATERIALS

#### Shell & Cushions

The shell consists of two parts a base and a back shell, both are made from hard polyurethane (PUR) foam with glass fibre reinforcement. Both parts have an embedded steel frame and the base also with mounted nozag springs. The base and back shell are assembled with 6 steel brackets and Hex Socket screws. The outside of the back shell and base is covered with a thin, soft layer of polyurethane foam and wadding. Seat and back cushions are made of PUR foam, the decorative cushions are made of low resilience memory PUR foam.

The shell and cushions are fully upholstered in fabric.

- Several textiles are available with EU Ecoflower mark.
- A water-soluble glue is used for bonding of textile to the foam.

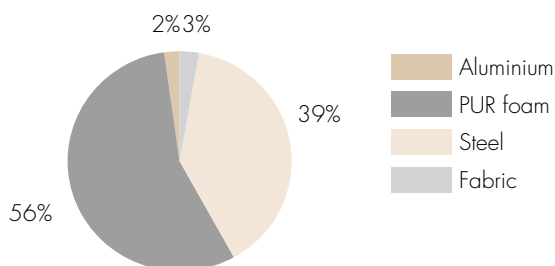
#### Legs

The four legs consists 3 visible parts; an upholstered trumpet matching the base, a satin polished aluminium cylinder and a felt glide to protect the floor (the legs can also be disassembled if necessary when moving the sofa).

#### Materials in %

The below figures illustrate the weight allocation between the different materials used. Items with a weight < 1% of the total product weight are not included in the figures below. The upholstery percentage may vary depending on the upholstery type.

Model JH3:



### PACKAGING MATERIAL

The sofa is shipped and protected in a wooden box covered with a plastic bag and PE foam. All packaging material can be recycled.

### REPAIR, DISPOSAL AND REUSE

In the case of disposal the sofa can be disassembled into different parts (back shell, base, loose cushions and legs) for recycling, special handling and repair. The back shell and base requires special handling because of the embedded steel frame. The foam in the loose cushions can be granulated and re-used. The legs and all other metal parts (brackets etc) can be recycled.

Check local regulations for recycling in your area and whether there is potential for reuse.

## MANUFACTURING PROCESS

### Suppliers

Suppliers environmental stance is examined as part of Fritz Hansen's quality and environmental management systems before Fritz Hansen enters into a cooperation with a supplier.

### Foam

Foam for filling and upholstery is freon-free. Remnants are granulated, wherever possible, for recycling as cushion filling.

### Glue

Glue used for bonding veneers and upholstered furniture are watersoluble.

### Metal

Production scrap (steel and aluminium) is collected for recycling.

### Plastic

Plastic components are identified with a recycling code whenever possible to facilitate the return of the materials to the recycling stream.

## MANAGEMENT SYSTEMS

### Environmental Systems.

We are aware of our environmental responsibilities. Therefore, in the autumn of 2004 Fritz Hansen obtained the ISO 14001 certification in the environmental management system. The certification is a guarantee to our customers and the authorities that we comply with the requirements of the ISO 14001:2015 standard.

### Quality System

Fritz Hansen is also certified according to the quality system ISO 9001:2015.

### Employee Health and Safety

Fritz Hansen aims at meeting or exceeding OSHA standards.

## LONG LIFETIME

A long lifetime of a piece of furniture is an important environmental factor. Fritz Hansen aims to obtain a long lifetime through timeless design and strict requirements for strength and durability. The sofa complies with the requirements for EN 15373:2007 Non domestic seating - Test Level 2.

## MORE INFORMATION

Please visit [www.fritzhanzen.com](http://www.fritzhanzen.com) for additional environmental information and to download our Perspective on Sustainability & Corporate Environmental Policy.